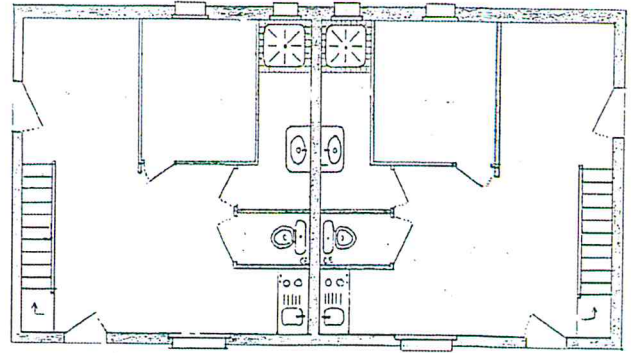




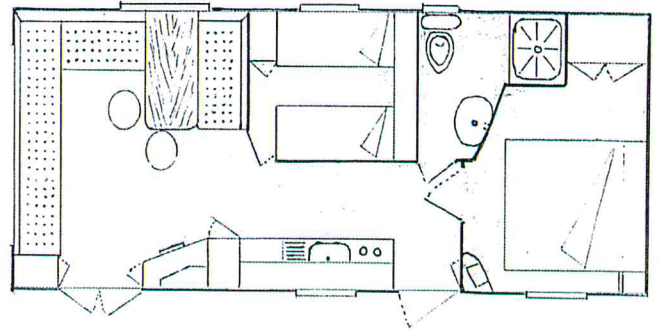
CHALETS

- (n°1)
- (n°2)
- (n°3)
- (n°4)



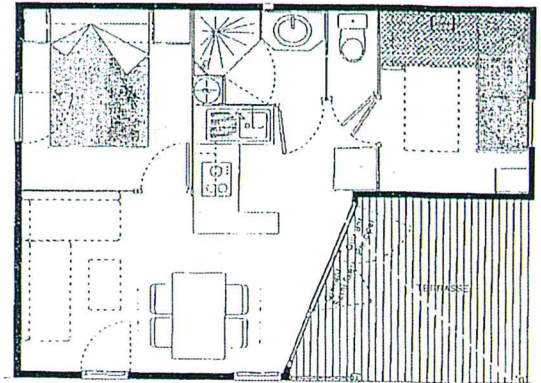
MOBILES-HOMES

- (n°1)
- (n°2)
- (n°3)



CHALETS

- (n°5)
- (n°6)
- (n°7)

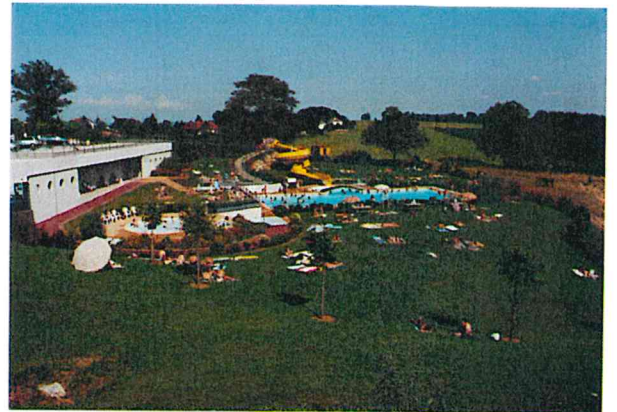


EMPLACEMENTS

CARAVANES
TENTES



PISCINE
MUNICIPALE



PLAN DU CAMPING

